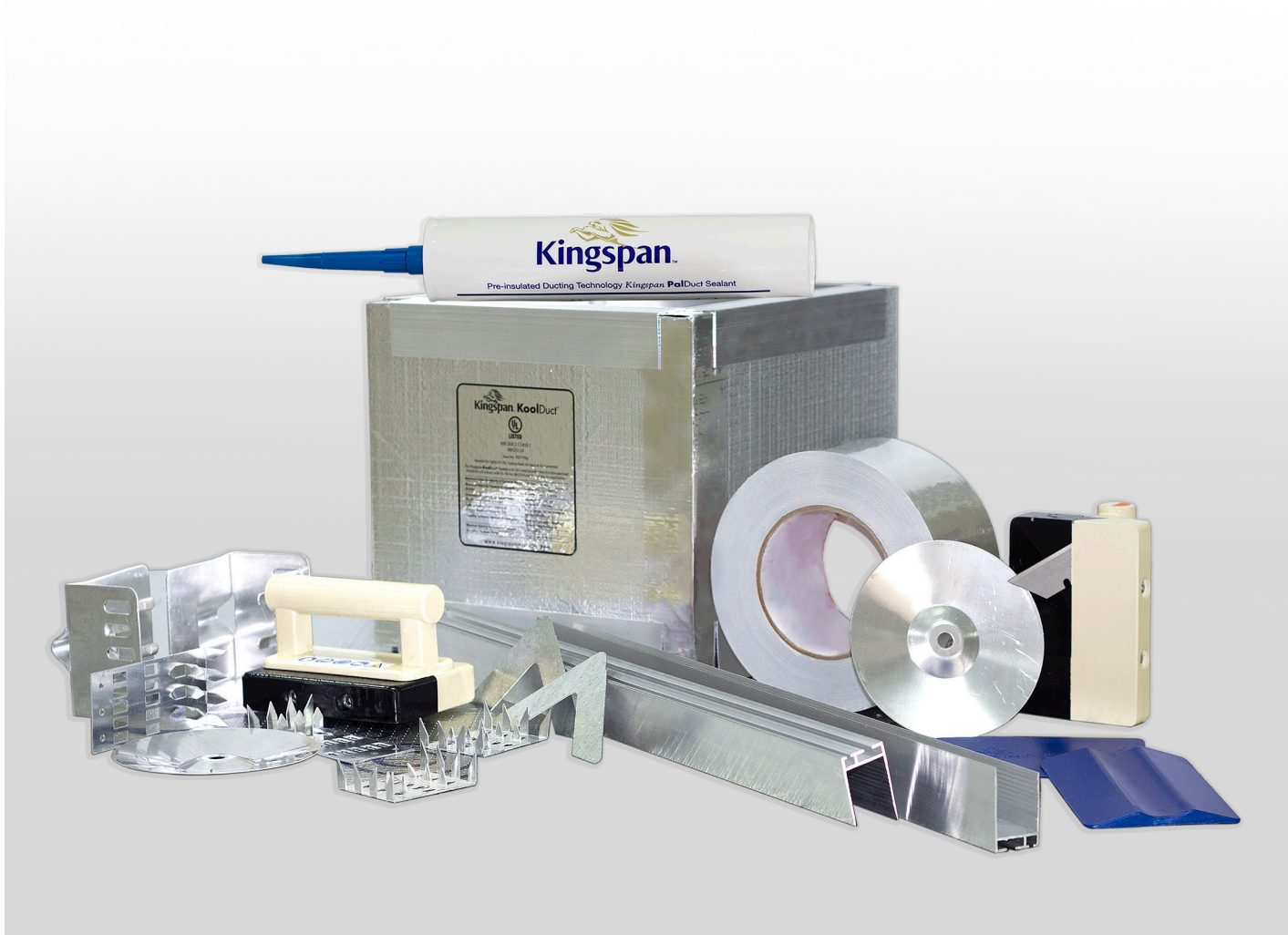


Insulation



# Kingspan **KoolDuct**<sup>™</sup> System

Catalogue of Materials, Tools & Accessories Metric (SI)



Fibre-free  
Core



---

# Introduction

---

## What is The Kingspan KoolDuct™ System?

The Kingspan KoolDuct™ System comprises premium performance Kingspan KoolDuct™ panels, fabrication methods, coupling systems and a complete line of accessories to produce pre-insulated rectangular ductwork in sections up to 3.93 m long. Kingspan KoolDuct™ panels are available in the following standard thicknesses:

- 20 mm; and
- 30 mm.

This allows ductwork to be fabricated with different wall thicknesses to suit different performance specifications.

Ductwork fabricated from the Kingspan KoolDuct™ system is UL Listed as a Class 1 Air Duct, to Standard for Safety UL 181 (Factory Made Air Ducts + Air Connectors) when fabricated to a specification clearly defined by UL.



## Advantages of Kingspan KoolDuct™ Technology

- Easy to clean and hygienic.
- Environmentally friendly: CFC/HCFC-free. Low GWP < 5.
- Clean air: fibre-free insulation core.
- Resistant to fungus growth.
- Space saving: flush fitting installation possible.
- Low 'λ' value.
- Fast-track installation: rapid erection combined with single-fix installation.
- On-site fabrication capability.
- No limits to duct sizes.
- High-compressive strength.
- High rigidity /integrity.
- UL Listed as a Class 1 Air Duct to Standard for Safety UL 181 (Factory Made Air Ducts + Air Connectors) when fabricated to a specification clearly defined by UL.



## Availability

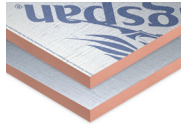
Kingspan Insulation offers a complete product line, providing all materials, tools and accessories necessary for the effective fabrication of ductwork from The Kingspan KoolDuct™ System, each of which are shown in this document. To facilitate a single source supply, the complete product line is available to purchase through appointed Kingspan KoolDuct™ Delivery Partners.

Each component has been rigorously tested in the field, in a variety of ductwork applications, to the highest performance standards. This ensures that the quality of the materials from which ductwork from The Kingspan KoolDuct™ System is fabricated, meets the standards required by Kingspan Insulation.

As a result, under no circumstances are unapproved components to be used in place of the joining systems, adhesive, silicone sealant and aluminium tape supplied by Kingspan Insulation. Prior approval in writing should be obtained from Kingspan Insulation (see rear cover) for the use of alternative materials.

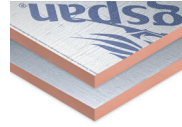
# Kingspan KoolDuct™ Panels

## Kingspan KoolDuct™ Panel (20 mm)



Pack Quantity	4 x 4.716 m <sup>2</sup>
Packaged Weight	29 kg
Pack Size	3930 x 1200 x 80 mm
Panel Size	3930 x 1200 x 20 mm
Panel Facings	Silver Branded / Silver Plain
Outer Packaging	Shrink Wrap
Code	2150

## Kingspan KoolDuct™ Panel (30 mm)



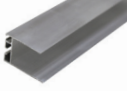
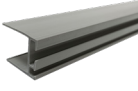
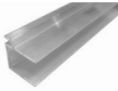
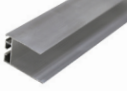
Pack Quantity	5 x 4.716 m <sup>2</sup>
Packaged Weight	51 kg
Pack Size	3930 x 1200 x 150 mm
Panel Size	3930 x 1200 x 30 mm
Panel Facings	Silver Branded / Silver Plain
Outer Packaging	Shrink Wrap
Code	2158

### A Note About this Document


- All measurements shown in this document are approximate and are given in metric units, using the International System of Units (SI).
- Pack/unit sizes are given in the order of length x width x height, depth or diameter.
- Kingspan KoolDuct™ Delivery Partners may not stock all items shown in this document.
- Kingspan Insulation LLC reserves the right to change any information contained in this document without prior notice.

# Kingspan Accessories


## Polymer/Aluminium Invisible Profile/ Aluminium Joint Profile

	Thickness	20 mm
	Code	4010 (Aluminium Invisible Profile)
	Nominal Length	4 m
	Thickness	20 mm
	Code	4100 (Polymer Invisible Profile)
	Nominal Length	4 m
	Thickness	30 mm
	Code	4040 (Aluminium Joint Profile)
	Thickness	30 mm
	Code	4041 (Aluminium Invisible Profile)
	Nominal Length	4 m



## H Bayonet in Polymer

	Thickness	20 mm
	Code	4105
	Nominal Length	4 m

## Aluminium Channel

	Thickness	30 mm
	Code	4080
	Nominal Length	4 m

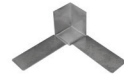
## Corner Cover in Polymer

	Thickness	20 mm
	Code	4350
	Thickness	30 mm
	Code	4390

## Corner Plate for Invisible Profile

	Thickness	30 mm
	Code	4400
	Thickness	20 mm
	Code	4360

## Steel Corner

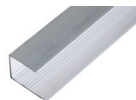


Code	4380
------	------

## Aluminium U Profile

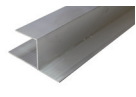


Thickness	20 mm
Code	4013
Nominal Length	4 m

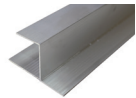


Thickness	30 mm
Code	4042
Nominal Length	4 m

## Aluminium Chair Profile

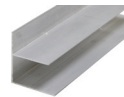


Thickness	20 mm
Code	4015
Nominal Length	4 m

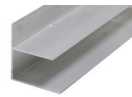


Thickness	30 mm
Code	4043
Nominal Length	4 m

## Aluminium F Profile



Thickness	20 mm
Code	4017
Nominal Length	4 m



Thickness	30 mm
Code	4044
Nominal Length	4 m

## Reinforcement Bar in Aluminium



Thickness	14 mm
Code	4450
Nominal Length	4 m

---

# Kingspan Accessories, Adhesive Material & Components

---

## Reinforcement Disc in Aluminium



Code	4454
------	------

## Reinforcement Disc in Polymer



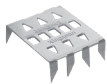
Code	4452
------	------

## Duct Support



Code	4455
------	------

## Tiger Clip



Code	3034
------	------

## Cross Fixing Device



Code	4453
------	------

## Kingspan PalDuct Sealant



Code	4250
------	------

## Screw for Stiffening Rod



Code	4458
------	------

## Kingspan PalDuct Contact Adhesive



Code	4200
------	------

## Gasket Self Adhesive



Code	4461
------	------

## Aluminium UL 181 Tape



Length	30 yard
Code	4340



Length	60 yard
Code	4346

# Automated and Manual Fabrication Equipment

## Automated

### Kingspan Ducting Supercut CNC Machine



Code	5004
------	------

### Kingspan Ducting CNC Machine



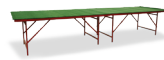
Code	5000
------	------

## Manual

A complete set of professional hand tools and manual fabrication equipment has been specifically developed to enable efficient and economical fabrication of ductwork. Ease of portability provides the option for on-site fabrication.

A full line of automated machinery is also available for high volume ductwork requirements.

### Portable Fabrication Table



Length (m)	4 x 1.2
Code	5054

### Compass



Code	8008
------	------

### Aluminium Clamping Ruler



Length (m)	4
Code	5055



Length (m)	1.2
Code	5056



# Automated and Manual Fabrication Equipment

## Kingspan PalDuct Manual Fabrication Tool Kit



Left Cutter	45°
Right Cutter	45°
Straight Cutter	90°
Double Blade Cutter - 20 mm	45°
Compass	
Glue Spreading	Manual
Stiff Spatula	Aluminium
Manual Silicone Gun	
Measuring Tape	
Rivet Gun	
Rubber Hammer	
Knife	
Tape Marker	
Code	5053

## Square in Aluminium



Size (mm)	1200
Code	5057



Size (mm)	700
Code	5058

## Cutter Box



Left Cutter	45°
Right Cutter	45°
Double Blade Cutter 20 mm	45°
Straight Cutter	90°
Code	5082

## Manual Bending Machine



Code	5059
------	------

## Pneumatic Glue Spreader



Code	5060
------	------

## Extended Silicone Tool



Code	5063
------	------

## Double Blade Cutter



Size (mm)	20/30 45° Double Blade
Code	5069 (20 mm) 5070 (30 mm)

## Single Blade Cutter



Size (mm)	20/30 90° Straight 45° Left 45° Right
Code	(20/30 mm) 5072 (90° Straight) 5068 (45° Left) 5071 (45° Right)

## Stiff Spatula



Code	5075
------	------

## Glue Spreader Manual



Code	5081
------	------

## Tape Marker



Code	5077
------	------

## Rubber Hammer



Code	8040
------	------

---

# Contact Details

---

## Middle East

### Kingspan Insulation LLC

PO Box 113826 | Dubai Investment Park 2  
Dubai | UAE

T: +971 (0) 4 889 1000

F: +971 (0) 4 883 8515

E: [info@kingspaninsulation.ae](mailto:info@kingspaninsulation.ae)

[www.kingspan.com/ae/en](http://www.kingspan.com/ae/en)

## Technical Service

Kingspan Insulation has one of the most technically advanced support services in the industry offering a full spectrum of advice, free of charge for all types of design projects.

The Kingspan Insulation technical team are continually updating their knowledge on building regulations, best practise, construction methods and the development of building materials to ensure the advice and services provided are always one step ahead.

### Services available:

- U-value calculations;
- condensation/dew point risk calculations;
- advice on product selection and product data for the full range of Kingspan Insulation products;
- installation and fixing advice on all applications and products;
- specification and construction advice; and
- Tapered Roofing Design service.

Email: [technical@kingspaninsulation.ae](mailto:technical@kingspaninsulation.ae)

Kingspan Insulation LLC reserves the right to amend product specifications without prior notice. Product thicknesses shown in this document should not be taken as being available ex-stock and advice should be sought directly from Kingspan Insulation LLC. The information, technical details and fixing instructions etc. included in this literature are given in good faith and apply to uses described herein. Recommendations for use should be verified as to the suitability and compliance with actual requirements, specifications and any applicable codes, laws and regulations. For other applications or conditions of use, Kingspan Insulation offers a Technical Advisory Service, the advice of which should be sought for uses of Kingspan Insulation products that are not specifically described herein or specifically required for your region.

To ensure you are viewing the most recent and accurate product information, please visit this link <https://www.kingspan.com/ae/en/products/ductwork/pre-insulated-duct/koolduct/>

© Kingspan and the Lion Device are Registered Trademarks of the Kingspan Group plc. All rights reserved. TM KoolDuct is a Trademark of the Kingspan Group plc.

No rights can be derived from this document. Changes, typesetting and printing errors reserved. This version replaces all previous versions.

